

HEALTHY BIRTH, GROWTH & DEVELOPMENT

knowledge integration

December 5, 2017

Understanding ki data and the contributions from India

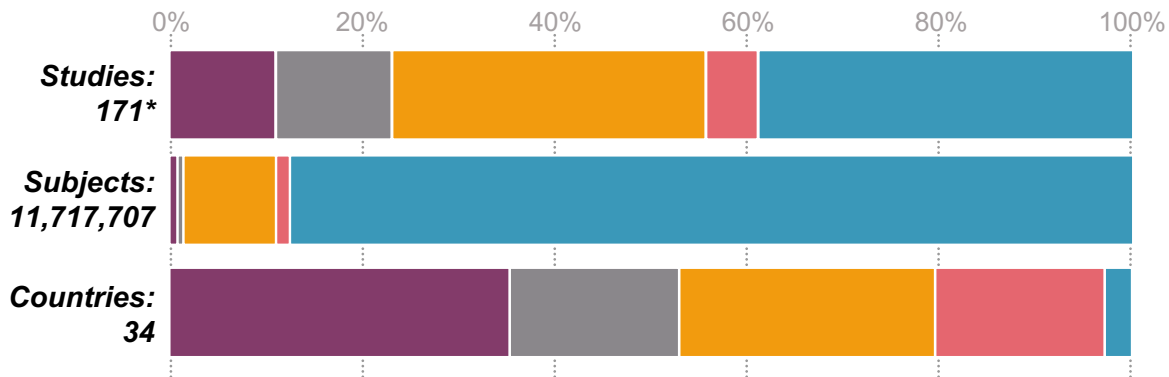
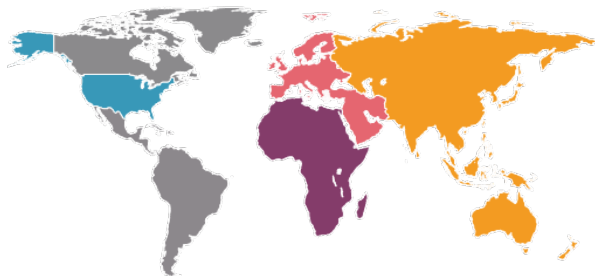
Tom Peppard & Vishak Subramoney



HBGD data is significant and increasing

Child Health Data

- Africa
- Americas (except USA)
- Asia/Pacific
- Europe/Middle East
- United States



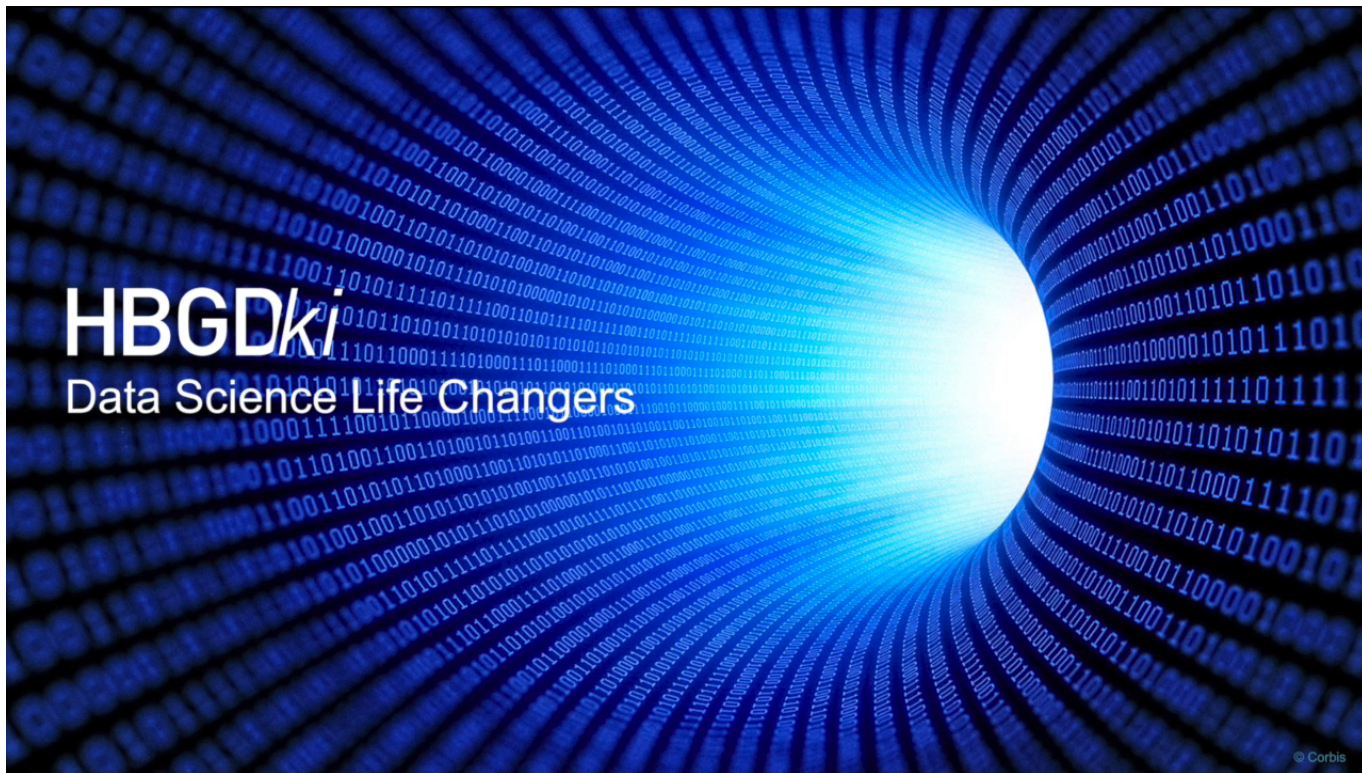
2415 outcomes & covariates: Demographic, Clinical, and Socioeconomic.

*As of November 21, 2017

Study Explorer application

A lightweight tool to help you understand the contents of datasets that were contributed to the HBGDKi.

Launch



Contributed data: Interventional studies

Study Name	Short Description	Population	Subject Count
DIVIDS	Randomised controlled trial to evaluate the effect on mortality and serious morbidity of daily vitamin D supplements in SGA term infants	Children who are not severely malnourished, anemic, or acutely or chronically ill	2,100
EU	Zinc supplementation in diarrheal pneumonia	Children in a New Delhi slum	2,482
IMNCI	Cluster randomised trial of the effect of the Integrated Management of Neonatal and Childhood Illness program on infant mortality	Newborns, Faridabad district, Haryana	60,480
LBW	Zinc supplementation in children with low birth weight	Hospital born children with low birth weight	2,052
NEOVITA	Neonatal vitamin A supplementation trial	Children in Haryana	45,000
SAS-CompFeed	Cluster randomized trial of the promotion of optimal complementary feeding practices	Infants in rural Haryana	1,025
SAS-FoodSuppl	Randomized trial: effect of feeding a food supplement to infants on weight gain	Infants, age 4 months, from an urban slum in Delhi	400
TDC	Bottled water to prevent or delay cryptosporidium infection	Birth cohort in 4 contiguous slums in Vellore	160
VITAMIN-A	Vitamin A supplementation	Mother-Infant pairs	4,716
Vitamin-B12	Vitamin B12 supplementation	Children	1,000
ZincInf	Zinc in treatment of diarrhoea	Infants with acute diarrhea	1,110
ZincSGA	Zinc supplementation in infants born small for gestational age	Infants born small for gestational age	1,154
ZnMort	Zinc supplementation and infant mortality	Children aged 1-23 mo	94,359

Contributed data: Observational studies

Study Name	Type*	Short Description	Population	Subject Count
BtS	L	Brain to Society diagnostic for the prevention of childhood obesity and its chronic disease consequences	9 rural villages in Palwal, Haryana district, children aged 5-12 y	612
CMC-V-BCS-2002	L	Rotavirus seasonality and age effects in a birth cohort study in Vellore	Birth cohort in urban Vellore	373
Cord Blood Cytometry	CS	Leukocyte constituents in cord blood of neonates born in Delhi hospitals	Births at 3 secondary and tertiary care hospitals in Delhi with no major maternal risk factors for SGA at birth	541
DSS	CS	Demographic Surveillance Study in Vellore	Demographic surveillance in Vellore	154,371
IRC	L	Birth cohort study of Crypto infection in children	Birth cohort in 4 contiguous slums in Vellore	410
MAHANTrust	CS	Community based, prospective study of causes and time trends of child deaths (age, 0-5 y) over 10 years by verbal autopsy in tribal areas of Melghat	All deceased children, aged 0-5 y, from 34 villages in tribal regions of Melghat	535
NBSP	CS	Patterns of use of an advanced cookstove in households with newborns	Newborns in Palwal District, Haryana	202
SAS-FeedingCSS	CS	Cross-sectional survey: SES, feeding practice and foods available in the household	Randomly selected households with at least 1 child aged < 3 y in rural Haryana	5,448
TTBW	CS	Time trends in birth weight in 2 cohorts born at Government Maternity Hospital in Hyderabad	Children born at a government hospital in Hyderabad (1991-92 and 2005-06)	1,776

* L=Longitudinal; CS=Cross sectional

Observations

10⁰ 10¹ 10² 10³ 10⁴ 10⁵



Q&A